

sunday times

Seventh Sunday of Easter
May 17, 2015



Evangelical Lutheran Church in America

God's work. Our hands.

Calvary Lutheran Church, 108 Eastman St., Cranford, NJ 07016-2122
(908) 276-2418 office@calvarycranford.com <http://www.calvarycranford.com>
Office Hours: Monday - Friday 1:00pm - 5:00pm

Welcome to worship and Christian fellowship! Please greet one another in Christ's name.

If you are visiting with us today please fill out one of the yellow "Welcome Friend" visitor forms located in the pew rack and place it in the offering plate.

Today, we are celebrating two special ministries at Calvary.

PRAYER SHAWL MINISTRY!

Join us in the narthex at 9:30am to celebrate our amazing Prayer Shawl Ministry. These lovingly knitted and knotted blankets bring comfort and love to those who are suffering. Shawls will be on display for everyone to view the ministry's handiwork and refreshments will be served.



SUNDAY SCHOOL CELEBRATION!

At the 10:30am worship service, we will celebrate and give thanks for our Sunday School ministry, teachers, and assistants. The Sunday School children will provide the music and serve in various worship positions during the service.



Thank you to all the teachers and assistants that helped make this year a great success. And many thanks to Pastor Gunnar and Mary Anderson for leading the kids today in singing "I've Got Joy".

PASTOR ON VACATION

Pastor Carol leaves on vacation this afternoon and will be away until the evening of Sunday, May 24. If you have any pastoral concerns while she is away please contact the church office at 908-276-2418, or Church Council President, Karl Schlenker at 908-313-6247.

We are grateful to Pastor Gunnar Anderson who will lead our Pentecost Sunday worship next week.

Pastoral Prayers, Joys & Concerns

- ✠ Katrina and Matthew Poskay welcomed daughter Finley Anderson Poskay on Mother's Day, Sunday, May 10. Ty and Tatum Dobbins are the proud big brother and sister. Finley weighed 7 lbs, 14.6 oz.
- ✠ William Swing, Pat Jurpalis' brother suffered a mild heart attack this week and will be undergoing tests.
- ✠ Pastor Gary Kugler died on Friday while in hospice care. We will be praying for his family and all who mourn his death.

SUMMER WORSHIP SCHEDULE

BEGINS MAY 24

ONE SERVICE @ 9:30am

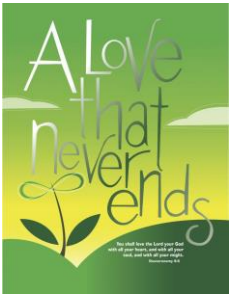
Our Summer Worship schedule begins next Sunday, May 24. Please join us for Worship and Holy Communion at 9:30am.

ARE YOU CELEBRATING A GRADUATION THIS SPRING? If your family is celebrating a high school or college graduation please let us know. Contact the church office at 276-2418 or send an email to office@calvarycranford.com with the name of the person graduating, the degree and school. We want to remember all graduates in a special prayer during worship in late June and recognize the achievements of our young people.

CALVARY FINANCIAL UPDATE:

As of the end of April 2015, income totaled \$103,026 with expenses totaling \$120,282, leaving an approximate shortfall of \$17,250. The overall shortfall is a result of lower 2015 giving combined with seasonally higher expenses, which should be lower during the spring/summer seasons.

The New Jersey Synod Assembly will be June 4, 5 & 6 in Long Branch, NJ. If anyone is interested in going to represent Calvary please contact the church office. Registration closes May 21.



Cross Roads Day Camp – 2015
Calvary Lutheran Church
Monday, August 17 –
Friday, August 21
9am-3pm
 (Extended care daily 8-9am
 and/or 3-6pm.)

Games! Songs! Crafts! Worship!
 All part of the fun filled week that is Cross Roads Day Camp. All children entering Kindergarten through 6th grade are welcome. And invite your friends! This is a great opportunity to learn about God and discover "A Love That Never Ends". **REGISTER NOW! \$125 per camper** (Add \$50 for extended care). Register at <http://www.calvarycranford.com>.



CALVARY BOOK CLUB –
TUESDAY, JUNE 30

Looking for a good book – why not read super popular novel "The Husband's Secret" by Liane Moriarty? USA TODAY says ""The Husband's Secret" is so good, you won't be able to keep it to yourself." Luckily you won't have to if you join us for our next book club on Tuesday June 30 @ 7:30pm!

COMMUNITY EVENTS

The Cranford Police Department presents...
"Current Drug Trend and
What We See in Cranford"
An in-depth presentation and discussion on how suburban communities are not immune to drug abuse.
Tuesday, May 19th @ 7pm
Cranford Community Center, 220 Walnut Ave.
All parents of Middle and High School Students
are strongly encouraged to attend.
Questions? Contact Det./Sgt. Greco at 709-7339.

YOUTH & FAMILY COUNSELING IN
COLLABORATION WITH TRINITY EPISCOPAL
CHURCH INVITE YOU TO JOIN US on
Thursday, May 21 6 – 8:30 PM
for PROMS, PARTIES, & PROBLEMS
DO NOT MISS THIS FREE WORKSHOP!!
Keep your kids safe as the school year ends
and summer begins!

Hosted by Trinity Episcopal Church, Cranford
 An open discussion of facts and tips for parents -
 Presentations by local lawyers and police officers -
 What the truth is about alcohol, other drugs and
 YOUR kids.

**Pre-register by calling YOUTH & FAMILY
 COUNSELING (908) 233-2042
 WALK-INS WELCOME*

THOSE SERVING TODAY

	8:30am	10:30am
Asst. Min.	Carla Flint	Donna Schlenker Kaitlyn Petschow Desirée Santos Emma Yager Ani Azcue Paul Ribardo
Readers		Karl Schlenker George Bird (C) Matthew McCarthy Thomas McCarthy Van Houten Family
Comm. Asst.	Leslie Schrieber	
Ushers	Henry Wichmann(C) Pat Wichmann Cliff Kaiser	
Acolyte	Ryan Bebel	TBA
Altar Guild	Melissa Sullivan	Melissa Sullivan

THIS WEEK AT CALVARY

Sun 5/17 *God's Love Poured Out*
Sunday School Celebration &
Prayer Shawl Recognition
 8:30am Worship w/Holy Communion
 9:30am Sunday School/
 Prayer Shawl Recognition
 10:30am Worship w/ Holy Communion
 5-7pm Confirmation Class
Wed 5/20
 Cross Currents Deadline
 Calvary CONNECT Mtg
 7:30pm
Thurs 5/21
 1:15pm Mid-Week Worship
Sun 5/24
 9:30am *Pentecost*
 Worship w/Holy Communion



HAVE YOU MADE YOUR PICTURE
APPOINTMENT? Sign up today to have
 your picture taken for the new Calvary
 Church directory! You can sign up in the narthex or
 online by going to www.calvarycranford.com and
 clicking on the Lifetouch link.

CHURCH DIRECTORY BUSINESS PAGE

As part of our new Church Directory, we will include
 pages with business cards from Calvary folks who
 own businesses or services. If you would like to be
 part of the Business/Services Page, please send in a
 business card along with \$35 to Calvary Lutheran
 Church and in the memo write Church Directory. You
 can put this in the offering plate or send to the church
 office no later than June 1. Also please send an email
 to donnaupel@gmail.com so your space can be
 reserved.

CALVARY ABROAD!

Calvary college student Bridget Gautieri is spending this semester abroad in Germany. She's already been there for more than 2 months and has had many adventures! To read about her experience as she studies theology at the Catholic University of Eichstätt check out her blog at

<https://bridgetingermany.wordpress.com/2015/>.

Lutheran- Episcopal Day at Great Adventure July 6, 2015

Lutheran Day @ Great Adventure is a great opportunity to spend some time with hundreds of friends. Tickets are \$50 and include Theme Park, Safari, Buffet Lunch with entertainment, and a free upgrade to Thrill Pass. These tickets are good for admission to Six Flags Great Adventure from July 6 through September 13. For season pass holders, lunch only tickets are \$18. Check out <http://www.njsynod.org/great-adventure-day> for more details, other ticket deals and to register.

WURFFEL FUND COLLEGE

LOAN/SCHOLARSHIP INFORMATION

A limited amount of financial aid is available for Lutheran college students through the Wurffel Memorial Fund. The aid will be provided in the form of a student loan but the entire loan may be forgiven on the basis of being an active member of a congregation in the NJ Synod. Any member planning to or attending a two or four year accredited college or university as an undergraduate may apply. Priority is based on financial need and activity in the life of the church as described by the pastor's recommendation letter. Applicants must have at least a "C" average to be considered. Contact the church office for more information and an application. All applications are due back to the church office by June 1.

A Reminder from the Mutual Ministry Committee:

Leaders/committees/teams please remember to keep our staff members "in the loop" as you plan church activities. This will help them discuss dates as they are being chosen and ensure our staff's connection and involvement. May the Lord continue to bless the mutual ministry we do here at Calvary.

CAREGIVER SUPPORT GROUP meets at 7:30pm the first non-holiday Monday of each month in the parish center at St. Helen's Church in Westfield. The next meeting will be June 1. The group is for those caring for chronically ill or elderly loved ones. Questions - Call Marilyn Ryan 908-232-1214

LUTHERAN DISASTER RESPONSE NEPAL AREA EARTHQUAKE

www.ELCA.org/disaster

Devastating images and stories are coming out of Nepal following a 7.8 magnitude earthquake on April 25. Sections of Kathmandu, the nation's capital, and surrounding areas lie in rubble. More than 7,000 people have lost their lives, and the number continues to rise as officials make their way through rural communities. It is estimated that 2.8 million Nepalese are displaced, and hundreds of thousands of homes destroyed. The need for food, water, medical care, blankets and shelter is great.

Lutheran Disaster Response is already actively networking with partners such as The Lutheran World Federation (LWF), Lutheran World Relief, and the ACT Alliance who are already active, providing shelter, clean water, food, sanitation, medical care, and other emergency supplies. The Lutheran World Federation has been asked by the Nepalese government to take a seat on its emergency coordination group.

Your gifts are needed now. Every gift designated to the "Nepal Area Earthquake" through Lutheran Disaster Response will be used entirely – 100 percent – to help those impacted by the quake rebuild their lives and livelihoods.

Yes, I want to help!

Lutheran Disaster Response:

Nepal Area Earthquake \$_____ IDG0092

Lutheran Disaster Response:

Where Needed Most \$_____ IDG0016

Name

Address

Email Address

*You can make your check out to Calvary Lutheran Church (please put NEPAL in the memo section) or make your check payable to Lutheran Disaster Response and send directly to: **Evangelical Lutheran Church in America, ELCA Gifts Processing Center, P.O. Box 1809, Merrifield, VA 22116-8009.** Write "Nepal Area Earthquake" or "Where needed most" on your check's memo line.*

The following programs are offered by SAGE Eldercare, are FREE and take place at, 290 Broad Street, Summit. Registration is required for all events by calling 908.598.5548 or emailing education@sageeldercare.org.

~Challenges of Growing Old Gracefully and Moving Forward

Wednesday, May 20 - 7 – 9 pm

Learn about aging with dignity, move management for older adults, organizing and decluttering, making smooth transitions, treasuring memories, and supporting adult children. Coping with the loss of a loved one and after care programs will also be discussed. This program, part of our monthly PREP meeting, will be led by *Doreen Hall and Anne Bangs*, from *TLC Senior Relocation*.

~ Alzheimer's Disease and Dementia Care Seminar
Wednesday, May 27 - 8am - 4:30pm

Deanna Butters, CDF, Director of Spend-A-Day at SAGE, will teach this full-day class designed to give an edge in successfully providing care for people with dementia in a variety of settings. The seminar will outline diagnosis, prognosis, treatment, communication, depression, repetitive and aggressive behavior, paranoia, personal care, pain, nutrition, activities and end of life. This is for both professionals and family caregivers. Those who attend the class may apply for the Dementia Practitioner Certification. *There is a \$180 charge for this course*. Course materials will be provided.

~ Medicare Open House

Thursday, May 28 - 11am - 12:3 pm

Join us for our second Spring Medicare Open House. *Elyse Drucker, Coordinator for SHIP of Union County* will make a presentation about Medicare. Counselors will be available to answer any Medicare– related questions.